



LAKE REGION AREA

Quick Reference Guide	1, 2
Schools	2, 3
Local Government	4
County Government	5, 6
State Government	6, 7

FOR AN EMERGENCY DIAL

911



Comments? Suggestions? Want to Advertise?

Contact Our Community Directory at 888-960-2949

or email us at: ouryp@att.net

www.ourcommunitydirectory.com

QUICK REFERENCE GUIDE

AIRLINES

Alaska Airlines	1-800-426-0333
American Airlines	1-800-433-7300
British Airways	1-800-247-9297
Delta	1-800-221-1212
Frontier	1-800-432-1359
Hawaiian Airlines	1-800-367-5320
JetBlue	1-800-538-2583
Southwest	1-800-435-9792
Spirit	1-800-772-7117
United	1-800-241-6522
Virgin America	1-800-359-8474

ANIMAL CONTROL

Gainesville	
3400 NE 53rd Ave.	352-264-6870
Lake Butler	
200 Southwest 1st St.	386-496-1262
Bradford County	
606 Edwards Rd. Starke	904-964-9200

AUTOMOBILE RENTING & LEASING

AVIS	1-800-230-4898
ALAMO	1-877-222-9075
BUDGET	1-800-527-0700
DOLLAR	1-800-800-4000
ENTERPRISE	1-800-261-7331
HERTZ	1-800-654-3131
NATIONAL	1-800-268-7240
THRIFTY	1-800-847-4389

BANKS

Bank Of America	1-800-432-1000
BB&T	1-800-226-5228
Chase	1-800-432-3117
The First National Bank	1-800-733-9970
M&I	1-888-464-5463
PNC	1-888-762-2265
RBC Bank	1-800-769-2553
Suntrust	1-800-330-4684
TD Bank	1-800-462-3666
Wells Fargo	1-800-798-2815

BUS SCHEDULES

Gainesville	352-334-2600
-------------------	--------------

CHAMBERS OF COMMERCE

Alachua County	
5620 NW 120 Ln, Gainesville..	352-374-5245
North Florida Regional	
100 East Call St. Starke	904-964-5278
Clay County	
1734 Kingsley Ave. Orange Park.	904-264-2651
Gainesville	
300 E University Ave #100	352-334-7100
Hawthorne	
Johnson St. SE 221 St.	352-481-4818
Putnam County	
1100 Reid St. Palatka	386-328-1503

CITY HALL/ ADMINISTRATIONS

Brooker	
17435 Tetstone Ave.	352-485-1022
Gainesville	
200 E University Ave.	352-334-5000

Hampton	352-468-1201
Hawthorne	
6700 SE 221st St.	352-481-2432
Keystone Heights	
555 S. Lawrence Blvd.	352-473-4807
Lake Butler	
200 Southwest 1st St.	386-496-3401
Lawtey	
2793 Lake St. Lawtey	904-782-3454
Raiford	
13172 County Road 229	386-431-1955
Starke	
209 N. Thompson St.	904-964-5027
Waldo	
207 SW 4th Blvd	352-468-1001

COMMUNITY CENTER

Lake Butler 155 NW 3rd St.	386-496-2447
---------------------------------	--------------

COMMUNITY DEVELOPMENT

Gainesville	352-334-5026
-------------------	--------------

DRIVERS LICENSE/ AUTOMOBILE REGISTRATION

Gainesville	
3207 SW 35th Blvd.	
(Butler Plaza)	352-374-5236
Gainesville 12 S.E. 1st St.	352-374-5236
Gainesville 5801 NW 34th St.	352-374-5236
Gainesville 5830 NW 34th St.	352-955-2111
Gainesville 5301 NE 39th Ave.	352-334-1760
High Springs 110 NW 1st Ave.	386-454-1416

**ELECTRICITY PROVIDERS
FIRE DEPARTMENTS**

Brooker Main St. Brooker.....	352-485-1629
Earleton.....	352-367-4000
Evinston	352-367-4000
Florahome 201 W. Ohio St.	386-659-2140
Gainesville 1025 NE 13th St.	352-334-5078
Grandin 101 S Magnolia Ave.	386-659-2140
Hampton	352-468-1201
Hawthorne 6700 SE 221st St.	352-481-3350
Keystone Heights 120 Flamingo St.	352-473-3630
Lake Butler 640 SW 4th Street ...	386-496-3401
Lawley.....	904-782-1750
Melrose 01 Cypress St.....	352-475-2005
Starke 123 E Jefferson St.	904-964-7110
Waldo 263 SW 2nd Way.....	352-468-1001

LIBRARIES

Gainesville	
401 E University Ave	352-334-3900
Hawthorne 6640 SE 221st St.....	352-481-1920
Keystone Heights 175 Oriole St.	352-473-4286
Lake Butler 250 SE 5 Ave.	386-496-3432
Melrose 312 Wynnwood Ave.	904-475-1237

HOSPITALS

Kindred Hospital North Florida	
801 Oak St. Green Cove Springs.....	904-284-9230
Lake Butler Hospital	
850 E. Main St. Lake Butler.....	386-496-2323

North Florida Regional Medical	
6400 W Newberry Rd, Gainesville.....	352-333-4000
Orange Park Medical Center	
2001 Kingsley Ave, Orange Park.....	904-639-8500
Putnam Community Medical	
611 Zeagler Drive, Palatka.....	386-328-5711
Ramadan Hand Institute	
575 SE 3rd Ave., Lake Butler ..	386-496-2461
Shands Starke Regional Medical	
922 E. Call Street, Starke.....	904-368-2300

POLICE DEPARTMENTS

Brooker 18881 Charlotte Ave.	352-485-2978
Earleton (Alachua Co Sheriff)	352-367-4000
Evinston (Alachua Co Sheriff).....	352-367-4000
Gainesville 413 NW 8th Ave.	352-393-7500
Hampton 5784 Navarre Ave.	352-468-1692
Keystone Heights	
(Clay Co Sheriff)	904-264-6512
Lawley 2793 Lake Street	904-782-3751
Starke 830 Edwards Road.....	904-964-5400
Waldo 14660 NE Waldo Road.....	352-468-1515

POST OFFICES

USPS.....	800-ASK-USPS
-----------	--------------

PUBLIC WORKS

Alachua County	
5620 NW 120th Lane	
Gainesville.....	352-374-5245

Gainesville	
405 NW 39th Ave.	352-334-5070
Lake Butler	
640 SW 4th St.	386-496-1262

SHERIFF DEPARTMENTS

Alachua County	
2621 SE Hawthorne Road.....	352-367-4000
Bradford County	
945-B North Temple Ave.	
Starke	904-966-2276
Clay County	
901 North Orange Ave.	
Green Cove Springs.....	904-264-6512
Putnam County	
130 Orie Griffin Blvd. Palatka..	386-329-0800
Union County	
Courthouse Room 102	386-496-2501

SOLID WASTE

Gainesville	
405 NW 39th Ave.	352-334-2330
Keystone Heights	
555 South Lawrence Blvd.	352-473-0144
Starke.....	904-964-5027

TAG OFFICES

Alachua 3207 SW 35th Blvd.	352-337-6200
Lake Butler 125 E Main St.	386-496-1262
Starke.....	904-964-7999

WASTEWATER**SCHOOLS****ALACHUA COUNTY
ELEMENTARY**

Alachua Elementary	
13800 NW 152nd Place.....	386-462-1841
Archer Elementary	
14533 SW 170th Street	352-495-2111
Chiles Elementary	
2525 Schoolhouse Road	352-333-2825
Duval Elementary	
2106 NE 8th Avenue	352-955-6703
Finley Elementary	
1912 NW 5th Avenue	352-955-6705
Foster Elementary	
3800 NW 6th Street	352-955-6706
Glen Springs Elementary	
2826 NW 31st Avenue.....	352-955-6708
Hidden Oak Elementary	
2100 Fort Clarke Boulevard... 352-333-2801	
High Springs Community	
1015 North Main Street	386-454-1958
Idylwild Elementary	
4601 SW 20th Terrace	352-955-6709
Irby Elementary	
13505 NW 140th Street	386-462-5002
Lake Forest Elementary	
4401 SE 4th Avenue.....	352-955-6710
Littlewood Elementary	
812 NW 34th Street.....	352-955-6712

Meadowbrook Elementary	
11525 NW 39th Avenue	352-333-2828
Metcalf Elementary	
1250 NE 18th Avenue	352-955-6713
Newberry Elementary	
25705 SW 15th Avenue.....	352-472-1100
Norton Elementary	
2200 NW 45th Avenue	352-955-6765
Rawlings Elementary	
3500 NE 15th Street	352-955-6715
Shell Elementary	
21633 SE 65th Avenue.....	352-481-1901
Talbot Elementary	
5701 NW 43rd Street.....	352-955-6716
Terwilliger Elementary	
301 NW 62nd Street	352-955-6717
Waldo Community	
14450 NW 148th Avenue	352-468-1451
Wiles Elementary	
4601 SW 75th Street	352-955-6955
Williams Elementary	
1245 SE 7th Avenue.....	352-955-6719

MIDDLE

Bishop Middle	
1901 NE 9th Street	352-955-6701
Fort Clarke Middle	
9301 NW 23rd Avenue	352-333-2800
Hawthorne Middle	
21403 SE 69th Avenue.....	352-481-1900

High Springs Community	
1015 North Main Street	386-454-1958
Kanapaha Middle	
5005 SW 75th Street	352-955-6960
Lincoln Middle	
1001 SE 12th Street	352-955-6711
Mebane Middle	
16401 NW 140th Street.....	386-462-1648
Oak View Middle	
1203 SW 250th Street	352-472-1102
Westwood Middle	
3215 NW 15th Avenue	352-955-6718

HIGH

Buchholz High	
5510 NW 27th Avenue	352-955-6702
Eastside High	
1201 SE 43rd Street	352-955-6704
Gainesville High	
1900 NW 13th Street	352-955-6707
Hawthorne High	
21403 SE 69th Avenue.....	352-481-1900
Loften High	
3000 E University Avenue	352-955-6839
Newberry High	
400 SW 258th Street	352-472-1101
Santa Fe High	
16213 NW US Hwy. 441.....	386-462-1125



BRADFORD COUNTY

ELEMENTARY

Brooker Elementary
18551 Charlotte Avenue
Brooker..... 904-966-6887
Hampton Elementary
10501 Hampton Avenue
Hwy. 221 904-966-6884
Lawtey Community
22703 North Park Street
Lawtey..... 904-966-6795
Southside Elementary
823 E. Stansbury Street
Starke..... 904-966-6061
Starke Elementary
1000 Weldon Street, Starke..... 904-966-6045

MIDDLE

Bradford Middle
527 N. Orange Street, Starke.. 904-966-6705

HIGH

Bradford High
582 North Temple Ave, Starke 904-966-6075
Bradford/Union Tech
501 North Orange St, Starke... 904-966-6764

CLAY COUNTY

ELEMENTARY

Argyle Elementary
2625 Spencer Plantation Blvd.
Orange Park..... 904-573-2357
Charles E Bennett Elem
1 South Oakridge Avenue
Green Cove Springs..... 904-529-2126
Clay Hill Elementary
6345 County Road
218 Jacksonville..... 904-289-7193
W.E. Cherry Elementary
420 Edson Drive, Orange Park 904-278-2050
Clay Virtual Academy
23 South Green Street
Green Cove Springs..... 904-529-4804
Coppergate Elementary
2250 County Road 209 N
Middleburg..... 904-291-5594
Doctors Inlet Elementary
2634 County Rd. 220
Middleburg..... 904-213-3000
Fleming Island Elementary
4425 Lake Shore Drive
Orange Park..... 904-278-2020
Grove Park Elementary
1643 Miller Street
Orange Park..... 904-278-2010
S. Bryan Jennings Elementary
215 Corona Drive
Orange Park..... 904-213-3021
Keystone Heights Elementary
335 SW Pecan St.
Keystone Heights 352-473-4844
Lake Asbury Elementary
2901 Sandridge Road
Green Cove Springs..... 904-291-5440
Lakeside Elementary
2752 Moody Rd.,
Orange Park..... 904-213-2966
McRae Elementary
6770 County Rd.,
315, Keystone Heights 352-473-5686

Middleburg Elementary
3958 Main St., Middleburg 904-291-5485
Montclair Elementary
2398 Moody Rd., Orange Park 904-278-2030
Oakleaf village Elementary
410 Oakleaf Village Parkway,
Orange Park..... 904-291-5458
Orange Park Elementary
1401 Plainfield Ave.
Orange Park..... 904-278-2040
Paterson Elementary
5400 Pine Ave., Orange Park.. 904-278-2078
Plantation Oaks Elementary
4150 Plantation Oaks Blvd.,
Orange Park 904-214-7474
RideOut Elementary
3065 Apalachicola Blvd.,
Middleburg..... 904-291-5430
Ridgeview Elementary
421 Jefferson Ave.,
Orange Park..... 904-213-2952
Swimming Pen Creek
1630 Woodpecker Lane
Middleburg..... 904-278-5707
Shadowlawn Elementary
2945 County Rd.,
Green Cove Springs..... 904-213-2036
Thunderbolt Elementary
2020 Thunderbolt Road
Orange Park..... 904-278-5630
Tynes Elementary
1550 Tynes Blvd., Middleburg. 904-291-5400
Wilkinson Elementary
4965 State Rd., 218 W.,
Middleburg..... 904-291-5420
Clay Virtual Academy
23 S Green St.
Green Cove Spngs..... 904-529-4804

HIGH

Green Cove Springs Jr. High
1220 Bonaventure Avenue
Green Cove Springs..... 904-529-2140
Keystone Heights Jr-Sr High
900 Orchid Ave.,
Keystone Heights 352-473-2761
Lake Asbury Junior High
2851 Sandridge Road
Green Cove Springs..... 904-291-5582
Lakeside Junior High
2750 Moody Rd., Orange Park 904-213-2980
Oakleaf Junior High
4085 Plantation Oaks Blvd.
Orange Park..... 904-213-5500
Orange Park Junior High
1500 Gano Ave., Orange Park 904-278-2000
Wilkinson Junior High
5025 County Rd., 218,
Middleburg..... 904-291-5500
Bannerman Learning Center
608 Mill St.,
Green Cove Springs..... 904-529-2100
Clay High School
2025 Highway 16 West
Green Cove Springs..... 904-529-3000
Clay Virtual Academy
23 South Green Street
Green Cove Springs..... 904-529-4804

Fleming Island High
2233 Village Square Parkway,
Orange Park 904-541-2100
Keystone Heights High
900 S. Orchid Ave.,
Keystone Heights 352-473-2761
Middleburg High
3750 County Rd., Middleburg.. 904-213-2100
Oakleaf High
4035 Plantation Oak Blvd,
Orange Park..... 904-213-1900
Orange Park High
2300 Kingsley Ave.,
Orange Park..... 904-272-8110
Ridgeview High
466 Madison Ave., Orange Park 904-213-5203

PUTNAM COUNTY

ELEMENTARY

Browning-Pearce Elementary
100 Bear Blvd., San Mateo 386-329-0557
Childrens Reading Center
7901 St. Johns Ave., Palatka .. 386-328-9990
Interlachen Elementary
251 S State Rd., 315,
San Mateo 386-329-0557
James A. Long Elementary
1400 Old Jacksonville Hwy.
Route 6, Palatka 386-329-0575
Mellon Elem. 301 Mellon Rd.
Palatka 386-329-0593
Melrose Elementary
401 State Rd. 26, Melrose..... 352-475-2060
Miller Intermediate School
101 South Prospect St.,
Crescent City..... 386-698-1360
Moseley Elementary
1100 Husson Ave., Palatka..... 386-329-0562

MIDDLE

Beasley Middle
1100 South 18th St., Palatka .. 386-329-0569
C.H. Price Middle
140 North State Rd.,
315, Interlachen 386-684-2113
Jenkins Middle
1100 North 19th St., Palatka ... 386-329-0588
Miller Intermediate
101 South Prospect St.,
Crescent City..... 386-698-1360
Q.I. Roberts Middle
901 State Rd., 100, Florahome 386-659-1737

HIGH

Crescent City Jr/Sr High
2201 S Highway 17,
Crescent City..... 386-698-1629
Interlachen High
126 North State Rd.,
315, Interlachen 386-684-2116

UNION COUNTY

ELEMENTARY

Lake Butler Elementary
800 SW 6th St., Lake Butler.... 386-496-3047

MIDDLE

Lake Butler Middle
150 SW 6th St., Lake Butler.... 386-496-3046

HIGH

Union County High
1000 S Lake Ave., Lake Butler 386-496-3040

**LOCAL GOVERNMENT**

All Fire, Police & Ambulance Emergencies
DIAL 911 unless otherwise designated

BROOKER-CITY OF

Administration City Hall 352-485-1022
Fire & Rescue Department
Non-Emergency 352-485-1629
Police Department
Non-Emergency 352-485-2978

EARLETON-COMMUNITY OF

Fire Rescue & Police Department
Non-Emergency 352-367-4000

FLORAHOME-COMMUNITY OF

Fire Department Non-Emerg..... 386-659-2140

GAINESVILLE-CITY OF

City Government
General Information 352-334-5000
Abandoned Vehicles 352-334-5030
Administrative Services 352-334-5013
Animal Control/Licenses 352-264-6870
Block Grant Management 352-334-5026
Budget and Finance 352-334-5054
Building Permits & Inspections 352-334-5050
Bus Schedules
For City Buses Only 352-334-2600
Mini-Bus (Special Needs) 352-375-2784
Chamber of Commerce 352-334-7100
City Attorney 352-334-5011
City Auditor 352-334-5020
City Clerk 352-334-5015
City Commission 352-334-5016
City Engineer 352-334-5072
City Government Information 352-334-5017
City Manager
-Assistant City Manager 352-334-5010
Code Enforcement Division 352-334-5030
Communications & Marketing 352-334-5017
Community Action Agency 352-373-7667
Community Development 352-334-5023
Block Grants 352-334-5026
Code Enforcement Division 352-334-5030
Housing Division 352-334-5026
Planning Division 352-334-5023
Community Redevelopment
Agency 352-334-2205
Courthouse 352-374-3636
Cultural Affairs 352-334-5067
Arts Event Hotline 352-334-2787
Economic Development 352-334-5012
Equal Opportunity/Discrimination
Complaints 352-334-5051
Finance Department 352-334-5054
Accounting 352-334-5034
Billings & Collections 352-334-5024
Purchasing 352-334-5021
Treasury 352-334-5054
Fire Rescue Department
Non-Emergency/Administration 352-334-5078
Risk Reduction Bureau/
Public Safety 352-334-5065
Training 352-334-5075
Garbage/Trash Collection 352-334-2330
GRU Gainesville Regional
Utilities 352-334-3400

Historic Preservation 352-334-5022
Housing Division 352-334-5026
Human Resources/Personnel 352-334-5077
Job Line 352-334-5009
TDD/TTY 352-334-2292
Legislative Affairs &
Grants Coordinator 352-334-5010
Library 352-334-3900
Mayor's Office 352-334-5015
Mosquito Control-
Services Requests 352-393-8287
Spray Schedule 352-393-8100
Nature Operations 352-393-8171
Parking Decals 352-334-5024
Parking Meters 352-334-5024
Parks Recreation and
Cultural Affairs 352-334-5067
Permits and Licenses
Burning 352-334-5065
Landlord 352-334-5024
Occupational 352-334-5024
Planning/Zoning 352-334-5023
Police Department
Non-Emergency/
General Information 352-334-2400
Front Desk/Officer on Duty 352-334-2451
Communications Center 352-955-1818
Community Resource Division 352-332-5308
Criminal Investigations 352-334-2470
Internal Affairs 352-334-2445
Property/Evidence 352-393-7540
Records 352-334-7565
Public Works 352-334-5070
Operations 352-334-8161
Recreation & Parks Department 352-334-5067
Athletics 352-334-5067
Recycling Information 352-334-2130
Regional Transit System
Customer Service 352-334-2600
ADA Coordinator 352-334-2650
Risk Management 352-334-5045
Solid Waste Division 352-334-2330
Stormwater Management 352-334-5070
Street Maintenance 352-334-2161
Tag Office 352-374-5263
Traffic Engineering 352-334-5074
Transportation Services 352-334-5070
Utilities Gainesville Regional 352-334-3400
Customer Service 352-334-3434
TDD 352-334-2742
Location of Buried Utilities 800-432-4770
Electric Service/Repair 352-334-2871
Gas Service /Repair 352-334-2550
Water/Wastewater 352-334-2711
Victim Services 352-264-6760
Zoning 352-334-5023
Compliance Enforcement 352-334-5030
GRANDIN-COMMUNITY OF
Fire Department
Non-Emergency 386-659-2140
HAMPTON-TOWN OF
Administration/Town Hall 352-468-1201
Fire Department
Non-Emergency 352-468-1201

Police Department
Non-Emergency 352-468-1692
HAWTHORNE-TOWN OF
Administration/City Hall 352-481-2432
Chamber of Commerce 352-481-4818
Fire Department
Non-Emergency 352-481-3350
Volunteer Fire Department 352-466-3353
Library 352-481-1920
Sheriff Non-Emergency 352-955-2660
KEYSTONE HEIGHTS-TOWN OF
Administration/Town Hall 352-473-4807
Airpark Authority 352-473-0031
Airport 352-473-0031
Fire Department
Non-Emergency Flamingo 352-473-3630
Library 352-473-4286
Police Department
Non-Emergency 352-473-7211
Waste Management 352-473-0144
LAKE BUTLER-CITY OF
Administration/City Hall 386-496-3401
Animal Control 386-496-1262
Community Center 386-496-2447
Fire Department
Non-Emergency 386-496-3401
Library 386-496-3432
Sewage Treatment Plant 386-496-1262
Sheriff Non-Emergency 386-496-2501
LAWTEY-TOWN OF
Administration/Town Hall 904-782-3454
Fire Department
Non-Emergency 904-782-1750
Police Department
Non-Emergency 904-782-3454
MELROSE-CITY OF
Fire Department Non-Emergency 352-475-2005
Library 352-475-1237
Sheriff Non-Emergency 352-367-4000
RAIFORD-CITY OF
City Hall 386-431-1955
Community Center 386-431-1808
Sheriff Non-Emergency 386-496-2501
STARKE-CITY OF
Administration/City Hall 904-964-5027
Chamber of Commerce 904-964-5278
City Maintenance 904-964-2491
Fire Department
Non-Emergency 904-964-7110
Business Calls 904-964-7116
Police Department 904-964-5400
Project Director 904-964-2011
Public Works 904-964-2491
Purchasing Department 904-964-5322
Recreation Department 904-964-6792
Sewage Plant 904-964-7999
Water & Sewer Department 904-964-2491
WALDO-TOWN OF
Administration/City Hall 352-468-1001
Fire Department
Non-Emergency 352-468-1001
Library 352-468-3298
Police Department
Non-Emergency 352-468-1515



ALACHUA COUNTY

Administration/	
General Information	352-374-5210
TDD/TTY	352-491-4431
Animal Services	352-264-6870
Auto Tags	352-374-5236
Birth/Death Records	352-334-7970
Board of	
County Commissioners	352-264-6900
TDD/TTY	352-491-4430
Budget Office	352-374-5262
Chamber of Commerce	386-462-3333
Clerk of the Circuit Court &	
County Clerk	352-374-3636
TDD	352-491-4497
Child Support	352-374-3621
Civil and Probate	352-374-3618
Criminal Department	352-337-6250
Finance & Accounting	352-374-3605
Marriage Licenses	352-374-3623
Recording	352-374-3625
Traffic Infractions	352-374-3609
Codes Enforcement	
Building	352-374-5243
Inspection Requests	352-374-5243
Zoning/Codes Violations	352-374-5243
TDD/TTY	352-491-4429
Community Services	352-264-6700
TDD/TTY	352-955-2449
Cooperative Extension Services	352-955-2402
County Attorney	352-374-5218
County Clerk	352-374-3636
TDD	352-491-4497
County Commissioners	352-264-6900
County Manager	352-374-5204
Court Administrator's Office	352-374-3648
Jury Information	352-337-6238
TDD/TTY	352-337-6237
Court Services Pretrial &	
Probation Services	352-338-7348
TDD/TTY	352-491-4409
Courthouse	352-374-3636
Crime Stoppers	352-372-7867
Crisis Center	352-264-6785
Emergency Crisis Line	352-264-6789
Death Records	352-334-7970
Domestic Abuse	352-377-8255
Drug Treatment Program	
- Metamorphosis	352-955-2450
Economic Development	352-374-5249
Elections/Voter Registration	352-374-5252
TDD/TTY	352-491-4432
Emergency Management	352-264-6500
Employment Opportunities	352-955-2243
TDD	352-491-4431
Environmental Protection	352-264-6800
Equal Opportunity Division	352-374-5275
TDD/TTY	352-374-5284
Facilities Management	352-374-5229
Finance & Accounting	352-374-3605
Fire Rescue Services	
Non-Emergency	352-384-3130
Ambulance Billing	352-384-3150
Emergency Management	352-264-6500
Enhanced 911 Office	352-338-7361
Foster Grandparents Program	352-264-6731
Garbage/Trash Collection	352-338-3233

Growth Management	352-374-5249
TDD/TTY	352-491-4429
Guardian Ad Litem	352-374-3656
Health Department	352-334-7900
Appointments	352-334-7910
Environmental Health	352-334-7930
HIV/AIDS Anonymous Testing	352-334-7960
Household Hazardous	
Waste Collection Center	352-334-0440
Housing Programs	352-264-7013
Human Resources	352-374-5219
TDD	352-491-4431
Jobline	352-374-5299
Humane Society	352-373-5855
Jail	352-491-4444
Jury Information	352-374-3636
Library District Headquarters	352-334-3900
Bookmobiles	352-334-3992
Library Services and	
Reference Questions	352-334-3939
TDD	352-334-3904
Licenses	
Drivers	352-955-2110
Trades	352-374-5244
Occupational	352-337-6227
Vehicle	352-264-6868
Management & Budget	352-374-5262
Marriage Licenses	352-374-3636
Medical Examiner's Office	352-273-9292
Mental Health Services	352-374-5600
Emergency	352-264-6789
TDD Crisis Stabilization	352-374-5610
TDD Programs	352-374-5656
Parks & Recreation	352-374-5245
Partners for a	
Productive Community	352-264-6745
Personnel	352-374-5219
Job Vacancy Listing	352-955-2243
TDD/TTY	352-491-4431
Planning & Development	352-374-5249
Poverty Reduction Program	352-264-6749
Property Appraiser	352-374-5230
Public Defender	352-338-7370
Public Health Unit	352-334-7900
Public Information Officer	352-374-5226
Public Works/County Engineer	
Administration	352-374-5245
Parks & Recreation/Operations	352-374-5245
Waste Management	352-374-5213
Collection Centers	
Alachua/High Springs	386-454-2563
Archer	352-495-3257
Fairbanks	352-334-3873
North Central	352-334-3875
Phifer SR 20	352-334-3874
Transfer Facility	352-334-0172
Waste Collection	352-338-3233
Purchasing	352-374-5202
Bid Information/Requests	352-374-5270
Recycling	352-338-3233
Retired and Senior	
Volunteer Program	352-264-6732
Risk Management	352-374-5297
TDD	352-491-4431
Road and Bridge	
Maintenance	352-374-5245
Rumor Control	352-264-6557

Schools	352-955-7300
Senior Services	352-264-6730
Retired and Senior	
Volunteer Program	352-264-6732
Foster Grandparent Program	352-264-6731
Sheriff's Office	
Non-Emer/ 24 Hr Information	352-367-4000
Civil Bureau	352-384-3051
Communications Center/	
Crime Reporting	352-955-1818
Crime Stoppers	352-372-7867
Department of the Jail	352-491-4444
TDD/TTY	352-334-0133
Jail	352-491-4460
Narcotics Tip Line	352-374-1849
Records	352-367-4006
Victim Advocate Unit	352-384-3317
Warrants Bureau	352-367-4138
Social Services	352-264-6750
TDD/TTY	352-955-2499
State Attorney	352-374-3670
Tag Office	352-374-5236
Tax Collector	
Real Estate Property Taxes	352-374-5236
Delinquent Taxes	352-491-4436
Tag Agency	
- Auto Tag & Title	352-374-5236
Hunting/Fishing Licenses	
& Boat Registration	352-374-5236
Tourist Development	352-374-5231
Transportation & Development	352-374-5245
Veteran's Services	352-264-6740
Victims Services	352-264-6760
TDD/TTY	352-955-2449
Visitors and	
Convention Bureau	352-374-5231
Voter Registration	352-374-5252
TDD	352-491-4432
Waste Collection	352-338-3233
Waste Management	352-374-5213
Zoning	352-374-5243
BRADFORD COUNTY	
Administration	904-966-6280
Or	904-966-6339
Animal Control	904-964-9200
Building & Zoning Department	904-966-6223
Building Official	904-966-6223
Chamber of Commerce	904-964-5278
Circuit Court Clerk	904-966-6280
Cooperative Extension Service	
Agriculture	904-966-6224
Home Economics/4-H Youth	904-966-6299
County Clerk	904-966-6280
County Courthouse	904-966-6280
County Manager	904-966-6339
Elections Supervisor	904-966-6266
Emergency Management	904-966-6337
Emergency Services	904-966-6911
Environmental Health	904-964-5853
Health Department	904-964-7732
Environmental Health	904-964-5853
WIC	904-964-3547
Information Technology	904-966-6377
Jail	904-966-6178



6

COUNTY GOVERNMENT

© 2016-2017 Our Community Directory

BRADFORD COUNTY (Cont'd.)

Judicial	
Circuit Judge.....	904-966-6210
County Court Judge.....	904-966-6221
Library	904-368-3911
Marriage Licenses.....	904-966-2267
Mosquito Control.....	904-368-3971
Property Appraiser	904-966-6216
Public Defender's Office	
Misdemeanor Division	904-966-6272
Felony Division	904-966-6273
Public Health	904-966-7732
Road Department.....	904-966-6243
Sheriff's Department	904-966-6380
24 Hour Dispatch.....	904-964-6161
SHIP/State Housing Initiatives	
Partnership Program	904-966-6382
Solid Waste Department	904-966-6212
State Attorney's Office	904-966-6208
Supervisor of Elections	904-966-6266
Tax Collector's Office	904-966-6246
Vehicle Titles and Tags	904-966-6240
Property, Tax & Assessments..	904-966-6246
Zoning	904-966-6213

CLAY-COUNTY

Administration - Courthouse..	904-284-6300
Or.....	904-269-6302
Building Department.....	904-284-6307
Chamber of Commerce.....	904-264-2651
Council on Aging.....	904-284-6345
Health Department.....	904-529-2800
Sheriff's Department	
Keystone Heights.....	352-473-7211
Tax Collector.....	904-284-6320

PUTNAM-COUNTY

Administration/Information ...	386-329-0200
Administrator's Office	386-329-0212
Commissioner's Office.....	386-329-0205
Building & Zoning.....	386-329-0307
Codes Enforcement.....	386-329-0317
Permits & Inspections.....	386-329-0307
Zoning.....	386-329-0316
Chamber of Commerce.....	386-328-1503
Clerk of Circuit & County Courts	386-329-0361
Child Support/Alimony	386-326-7650
Circuit Civil.....	386-326-7620
Criminal Felony.....	386-326-7630
Criminal Traffic	386-326-7690

Finance	
Director.....	386-329-7660
Assistant Director	386-329-0233
Marriage License	386-326-7650
Misdemeanors	386-326-7640
Probate	386-326-7620
Recording	386-326-7680
Small Claims.....	386-326-7690
Traffic Violations.....	386-326-7690
Circuit Court Judges.....	386-329-0263
Cooperative Extension Service,	386-329-0318
County Attorney	386-329-1903
County Commissioner.....	386-329-0205
County Court Judges	386-329-0269
Courthouse.....	386-326-7600
Emergency Services	
Asst Director/Director	386-329-0379
Emergency Management ...	386-329-0379
Emerg Medical Services....	386-329-0892
Fire Division	386-329-0479
Rescue Billing.....	386-329-0240
911 Addressing.....	386-329-0381
Fleet Maintenance.....	386-329-0475
General Services.....	386-329-0368
GIS	386-326-2749
Guardian Ad Litem	386-329-0884
Health Department	386-326-3200
Environmental Health	386-326-3267
Human Resources.....	386-329-0221
Information Technology.....	386-329-0216
GIS	386-326-2749
Library System	386-329-0126
Planning & Development....	386-329-0491
Building & Zoning	386-329-0307
Code Enforcement.....	386-329-0317
Planning	386-329-0491
Property Appraiser Offices....	386-329-0493
Public Defender.....	386-329-0301
Public Works	386-329-0346
Purchasing Department	
Purchasing.....	386-329-0368
Receiving.....	386-329-0369
Recreation.....	386-329-1268
Sanitation Department	386-329-0395
Mosquito Control Division...	386-329-0397
Recycling Information	386-329-0466
Schools -	
Superintendent's Office.....	386-329-0510

Sheriff's Office Non-Emergency,	386-329-0800
Crime Stoppers.....	888 277-8477
Animal Services.....	386-329-0396
Civil Process.....	386-329-0837
Crime Prevention.....	386-326-7253
Jail Division.....	386-329-0853
Records-Reports	386-329-0822
Warrants	386-329-0839
State Attorney	386-329-0259
Supervisor of Elections	386-329-0224
Tax Collector's Office	386-329-0274
Delinquent Taxes.....	386-329-0276
Hunting/Fishing.....	386-329-0282
Occupational License	386-329-0277
Tag & Title	386-329-0282
Veterans Service Office	386-329-0327
Voter Registration	386-329-0224
Zoning	386-329-0316

UNION-COUNTY

Administration/Information....	386-496-4241
Board of Commissioners.....	386-496-4241
Building Department.....	386-496-2676
Circuit Court/	
County Court	
Clerk's Office	386-496-3711
Child Support.....	386-496-3724
Civil	386-496-4246
Criminal/Jury.....	386-496-4243
Finance.....	386-496-0099
Traffic Department	386-496-4247
Elections Supervisor	386-496-2236
Emergency Services	
Department.....	386-496-3839
Extension Office	386-496-2321
Family Youth &	
Community Sciences.....	386-496-4263
Fire Department	
Non-Emergency.....	386-496-3839
Housing Authority.....	386-496-2047
Jail	386-496-2501
Library	386-496-3432
Property Appraiser/Assessor	386-496-3431
Road Department.....	386-496-2180
School Board.....	386-496-2045
Sheriff's Office.....	386-496-2501
Solid Waste	386-496-2180
Tax Collector's Office	386-496-3331
TDD	386-496-3839

STATE GOVERNMENT

FLORIDA-STATE OF

State Information Center	850-488-1234
Abuse Hotline	800-962-2873
TDD	800-453-5145
Administration State Board of	850-488-4406
Adopt-A-Highway	800-226-5488
Adoption	800-962-3678
Aging Services	888-242-4464
Elder Helpline	800-963-5337
Agriculture & Consumer	
Services.....	850-488-3022
Consumer Services.....	800-435-7352
Attorney General.....	850-414-3300
Citizens Services.....	850-414-3990
Fraud Hotline.....	866-966-7226
TDD	800-955-8771
Auditor General	850-488-5534

Business & Professional Regulations	
Customer Contact Center...	850-487-1395
Alcoholic Beverages &	
Tobacco Division.....	850-488-3227
Office of the Secretary.....	850-413-0755
Chamber of Commerce.....	877-521-1200
Chief Inspector General	850-922-4637
Child Abuse Hotline.....	800-962-2873
TDD	800-453-5145
Child Support Enforcement...	800-622-5437
Children & Families Dept.	850-487-1111
TDD	850-922-4449
Abuse Hotline	800-962-2873
ACCESS Public Asst. Info.,	866-762-2237
Adoption Hotline.....	800-962-3678
Florida KidCare	888-540-5437
TTY.....	877-316-8748

Citizen Safety Center	866-966-7226
TDD	800-955-8771
Citrus Department of	863-499-2500
College Tuition Prepaid.....	800-552-4723
Community Affairs Department	850-488-8466
Or	877-352-3222
TDD	800-226-4329
Community Service Commission	850-921-5172
Conflict Resolution Consortium...	850-644-6320
Consumer Services Helpline,	800-435-7352
Lemon Law Assistance	800-321-5366
Corrections Department.....	850-488-5021
Office of Citizen Services...	888 558-6488
Community Corrections/	
Probation & Parole Services,	850-487-2165
Victim Assistance Office....	877-884-2846
Council on Indian Affairs	850-488-0730
Or	800-322-9186



FLORIDA-STATE OF (Cont'd.)

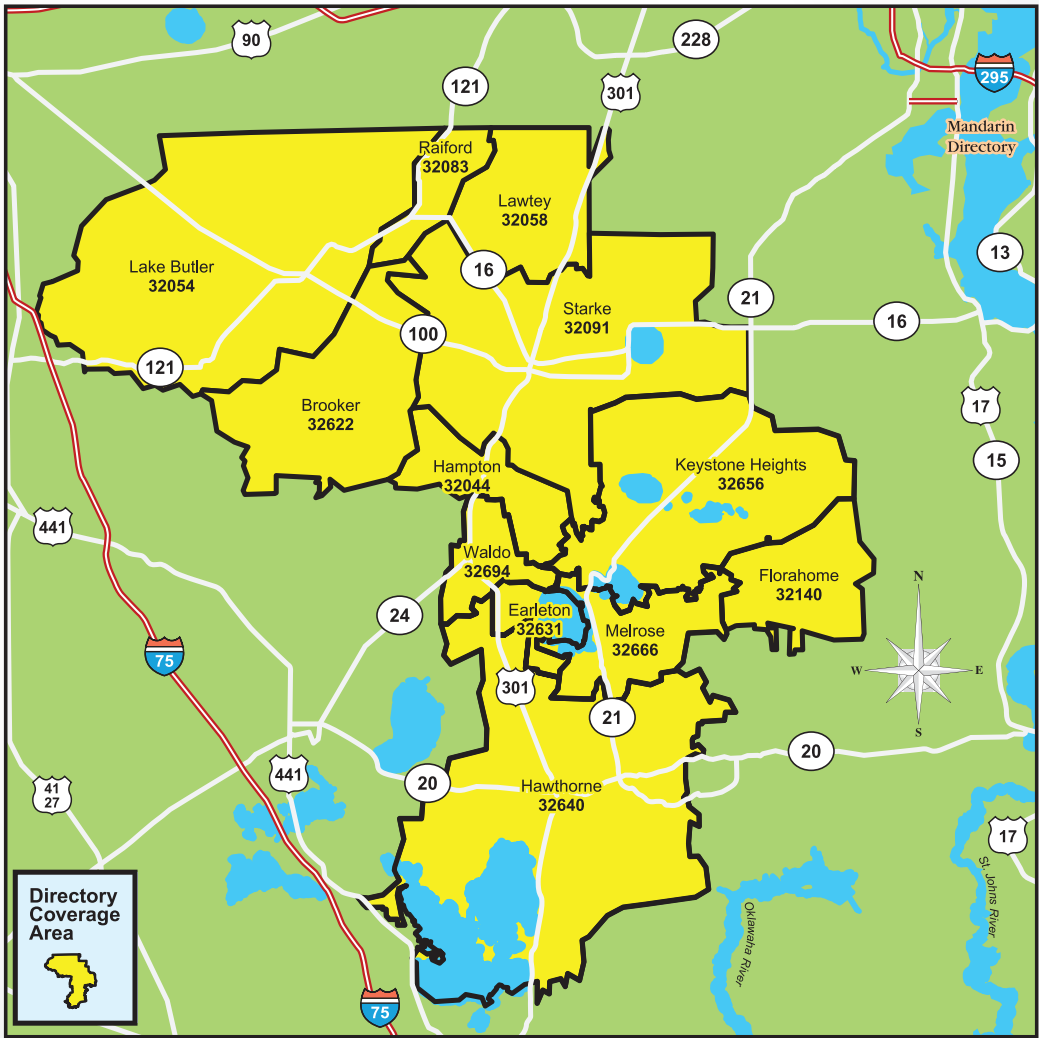
Credit Unions-State
Florida Commerce850-488-0035
Forestry850-488-7882
Government Employees
Credit Union of Florida800-766-4328
Highway Safety &
Motor Vehicle850-488-2880
Score Federal850-488-1015
State Employees904-798-4100
Or800-753-7328
Sunshine State850-488-3993
Disabled Citizen Employment850-224-4493
Do Not Call Program800-435-7352
Domestic Violence Hotline800-500-1119
TTY800-621-4202
Education Department850-245-0505
Elder Abuse800-962-2873
TDD800-453-5145
Elder Affairs Department850-414-2000
TDD850-414-2001
Elder Helpline800-963-5337
Elections Commission850-922-4539
Elections Division850-245-6200
Voter Assistance Hotline866 308-6739
TTY Voter Assistance800-955-8771
Voter Fraud Hotline877-868-3737
Emergency Management850-413-9900
Emergency Information Line800-342-3557
Employee Assistance Bureau800-342-1741
Environmental Health850-245-4250
Environmental Protection
Department850-245-2118
Emergency Response Bureau850-245-2010
Ethics Commission850-488-7884
Financial Services Department850-413-3100
Consumer Helpline877-693-5236
Fire Marshal850-413-3170
Florida Abuse
Hotline-Child or Adult800-962-2873
TDD800-453-5145
Florida Fish & Wildlife
Conservation Commission850-488-4676
Wildlife Violation Reporting888 404-3922
Florida Relay Service800-955-8770
TTY800-955-8771
Florida Space Authority321-730-5301
Forestry Division850-487-2785
Fraud Waste and Abuse850-577-4199
Governor850-488-4441
Health and Human Services Referrals211
Health Department850-245-4444
Children's Medical
Services Program850-245-4200
Disability Determination850-488-4222
Disease Control850-245-4300
Epidemiology850-245-4401
HIV/AIDS850-245-4334
Immunization850-245-4342
STD850-245-4303
Tuberculosis and
Refugee Health850-245-4350

Emergency Medical Services...850-245-4440
Environmental Health850-245-4250
Family Health Services850-245-4100
Medical Quality
Assurance Division850-245-4224
Vital Records904-359-6900
WIC800-342-3556
Health Care Administration888-419-3456
Highway Patrol850-488-8676
Highway Safety &
Motor Vehicles Department
Customer Service850-617-2000
House of Representatives
Clerk's Office850-488-1157
Housing and Community
Development850-410-1598
Human Relations
Commission850-488-7082
Complaint Line800-342-8170
Insurance Consumer
Complaints Helpline800-342-2762
Insurance Fraud800-378-0445
Insurance Regulation850-413-3140
Treasury Division850-413-3165
Worker's Compensation
Division850-413-1600
Judicial
District Courts of Appeal
First District850-487-1000
Second District863-499-2290
Third District305-229-3200
Fourth District561-242-2000
Fifth District386-947-1500
State Courts Administrator850-922-5081
Supreme Court
Clerk's Office850-488-0125
Juvenile Justice
Department850-488-1850
Law Enforcement
Department850-410-7000
Legislative Information
Division850-488-4371
Or800-342-1827
Lemon Law Assistance800-321-5366
Library and Information
Services State
Library850-245-6600
Licensure & Revenue Bureau850-413-3137
Lottery Department850-487-7777
TDD850-487-7784
Management Services
Department850-488-2786
RESPECT of Florida850-487-1471
Medicare Hotline800-633-4227
Mental Health Office850-488-8304
Substance Abuse Program850-487-2920
Military Affairs Department904-823-0364
Missing Children Information888-356-4774
Sexual Offender/
Predator Information888-357-7332
Parents Helpline800-352-5683

Parole Commission850-487-1978
Persons with Disabilities Agency850-488-4257
Or866-273-2273
Prepaid College
Tuition Program800-552-4723
Public Counsel850-488-9330
Public Service Commission800-342-3552
Revenue Department -
Tax Information850-488-6800
Tax Information and
Assistance800-352-3671
TDD850-922-1115
Or TDD800-367-8331
Secretary of State850-245-6500
Senate - Secretary850-487-5270
Small Business Environmental
Assistance Hotline800-722-7457
Space Authority Cape
Canaveral321-730-5301
State Courts Administrator850-922-5081
State Department850-245-6500
Corporations Division800-755-5111
Cultural Affairs850-245-6470
Cultural and Historical
Programs850-245-6300
Elections Division850-245-6200
Library and Information
Services Division850-245-6600
Licensing Division850-488-6982
State Library & Archives850-245-6600
Archives850-245-6700
State Parks Information850-245-2157
State Technology Office850-410-4777
Transportation Commission850-414-4105
Transportation Department850-414-4100
Or866 374-3368
Transportation for the
Disadvantaged Commission850-410-5700
TD Helpline800-983-2435
Utilities Complaints800-342-3552
Unemployment Compensation866-778-7356
Veteran's Affairs Department850-487-1533
Vital Records Office904-359-6900
Voter Assistance Hotline866-308-6739
TTY800-955-8771
Voter Fraud Hotline877-868-3737
Water Management Districts
Northwest Florida850-539-5999
South Florida561-686-6800
Southwest Florida352-796-7211
St Johns River386-329-4500
Suwannee River386-362-1001
WIC800-342-3556
Wildlife Violations Hotline888-404-3922
Workforce Florida850-921-1119
Workers' Compensation850-413-1601
Or800-742-2214
Workforce Innovation Agency850-245-7105
Job Corps800-779-1767
Unemployment
Compensation866-778-7356



Our Community Directory
Distribution Areas
For
LAKE REGION



Serving the following communities:

Brooker 32622	Earleton 32631	Florahome 32140	Hampton 32044	Hawthorne 32640	Keystone Heights 32656
Lake Butler 32054	Lawtey 32058	Melrose 32666	Railford 32083	Starke 32091	Waldo 32694